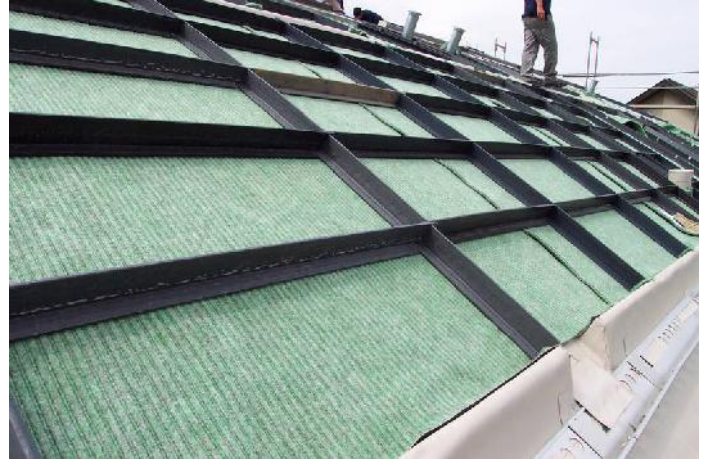


# DMG ST

## Anti-slip system

DMG anti-slip system type ST as anti-slip protection on pitched roofs with 15° - 45° roof pitch for placing against structural-ly effective (eaves) abutments.



<b>Material</b>	Recycled PP
<b>Dimensions</b>	Thickness: 10 mm Height: 80 mm Width: 80 mm Element lengths bracket: 3,250 mm Element lengths sill: 1,070 mm
<b>Colour</b>	black
<b>Sill spacing</b>	RP 15°-20° = 1,000 mm RP 21°-30° = 500 mm RP 31°-45° = 250 mm
<b>Max. Shear load</b>	per structurally effective abutment and Bracket in flow direction = 6.9 kN
<b>Centre distance of the Brackets</b>	1.0 m
<b>Accessories</b>	extension for bracket
<b>Quantity/ delivered unit</b>	according to size of order
<b>Delivery form</b>	according to size of order by parcel shipment or on Euro pallets by forwarding agent.
<b>Pack size</b>	according to size of order
<b>Delivery weight</b>	approx. 4.3 kg/m
<b>Storage</b>	cool and shady, protected from UV Plastic profiles can warp significantly in direct sunlight!!!

### Area of use

- As an anti-slip system on pitched roofs with inclines from 15° to 45° Attach shear supports to statically effective thrust bearings in the eaves area
- Calculation of the occurring shear forces is mandatory to dimension the statically effective thrust bearings.

### Specific properties

- Brackets slotted 4 cm deep every 25 cm to insert the sills.
- Sills at the ends also slotted 4 cm to insert into bracket.
- Centre distance of the brackets 1 m.
- Max. shear load: per structurally effective abutment and Bracket in flow direction = 6.9 kN.
- Sill spacing  
RP 15°-20° = 1,000 mm  
RP 21°-30° = 500 mm  
RP 31°-45° = 250 mm